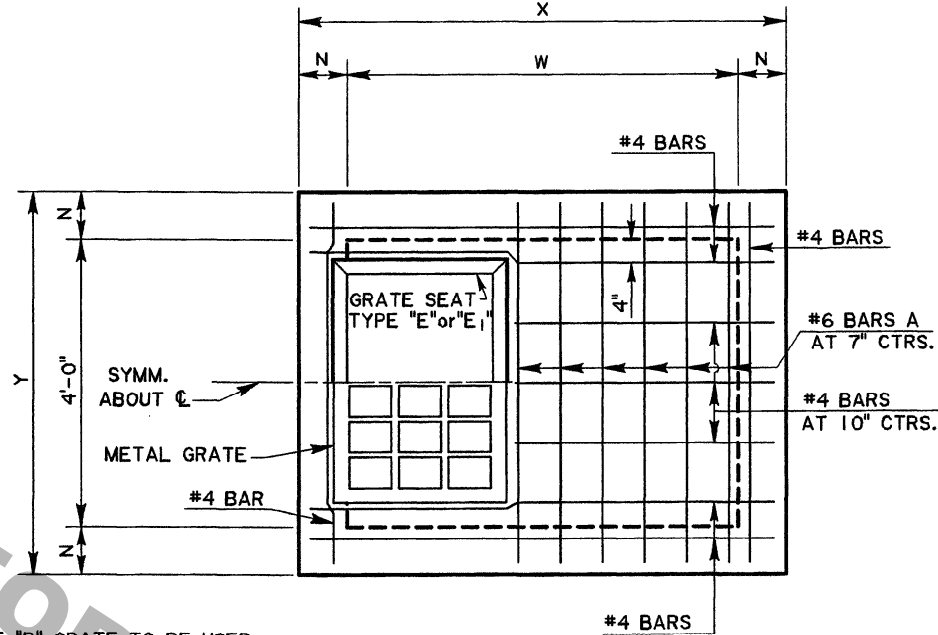


SECTIONAL PLAN
(SHOWING BOTTOM SLAB & WALLS)

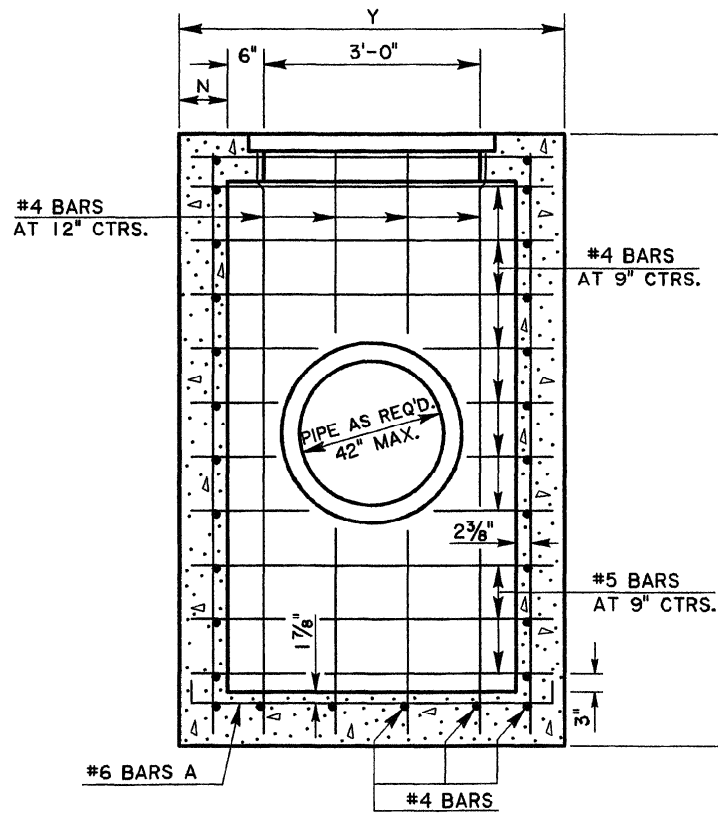


NOTE: TYPE "B" GRATE TO BE USED WHERE NO PEDESTRIAN TRAFFIC IS EXPECTED.
TYPE "C" GRATE TO BE USED WHERE PEDESTRIAN TRAFFIC IS EXPECTED.

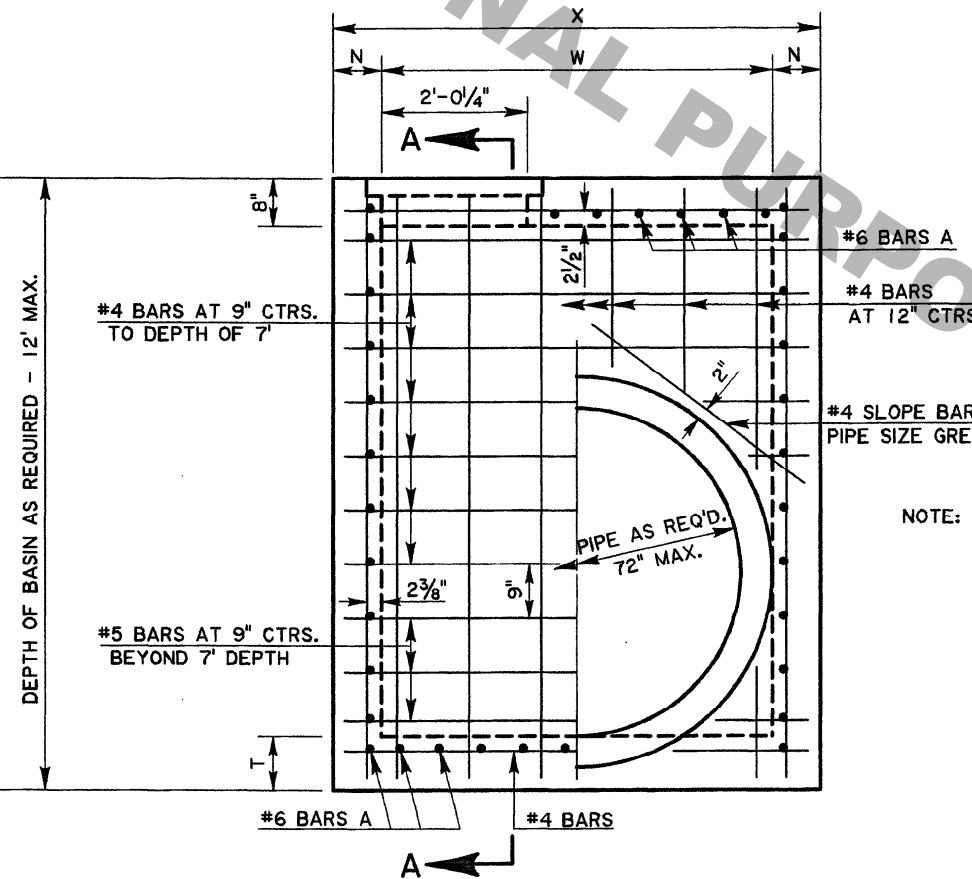
PLAN
GRATE TO BE TYPE "B" or "C".
TYPE "B" SHOWN.

| TRUNK PIPE | DEPTH TO 8' | | | | | DEPTH 8' TO 12' | | | | |
|------------|-------------|----|------|-----|-----|-----------------|----|------|------|-----|
| | N | T | W | X | Y | N | T | W | X | Y |
| 42 | 7 | 9 | 4-3 | 5-5 | 5-2 | 8 | 9 | 4-3 | 5-7 | 5-4 |
| 48 | 7 | 9 | 4-10 | 6-0 | 5-2 | 8 | 9 | 4-10 | 6-2 | 5-4 |
| 54 | 7 | 9 | 5-5 | 6-7 | 5-2 | 8 | 9 | 5-5 | 6-9 | 5-4 |
| 60 | 7 | 10 | 6-0 | 7-2 | 5-2 | 8 | 10 | 6-0 | 7-4 | 5-4 |
| 66 | 7 | 10 | 6-7 | 7-9 | 5-2 | 8 | 10 | 6-7 | 7-11 | 5-4 |
| 72 | 7 | 10 | 7-2 | 8-4 | 5-2 | 8 | 10 | 7-2 | 8-6 | 5-4 |

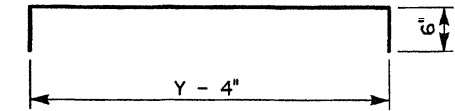
NOTE: X AND W DIMENSIONS MAY BE VARIED FOR SKEWED PIPE, BUT W SHALL NOT EXCEED 7'-2".



SECTION A-A



ELEVATION



#6 BARS A
(4/2" Diam. Pin)

NOTE: PIPE SIZE & LOCATION VARIES.
CUT REINFORCING STEEL TO CLEAR, AS REQUIRED.

GENERAL NOTES:

- SECTION 702 OF THE CURRENT DOTD STANDARD SPECIFICATIONS SHALL APPLY.
- DIMENSIONS RELATING TO REINFORCING STEEL ARE TO BAR CENTERS.
- VERTICAL REINFORCING STEEL MAY BE SPLICED. SPLICE LENGTH IS 35 DIAMETERS.
- FOR DETAILS OF GRATE AND SEAT, SEE STD. PLAN MC-01 (TYPE B or C).
- SEE PLANS FOR TYPE OF GRATE TO BE USED FOR EACH CATCH BASIN.

| | | | |
|--|--|----------------------|---------------|
| SHEET NUMBER | PARISH | FEDERAL PROJECT | STATE PROJECT |
| DESIGNED PAA | CHECKED | DATE | 1-31-97 |
| DETAILED KAJ | CHECKED NMR | DATE | 1-31-97 |
| APPROVED BY | JCM | BY | DATE: 1-2-00 |
| 11-2-00 | Converted Metric CB-02M to English CB-02 | REVISION DESCRIPTION | |
| DESIGNED BY | DATE | CHECKED BY | DATE |
| CHIEF ENGINEER: | | | |
| | | | |
| CONCRETE OPEN TOP CATCH BASIN Max. Pipes: 72" x 42" Max. Depth: 12' To Be Used in Conjunction With Std. Plan MC-01 | | | |
| | | | |
| STANDARD PLAN CB-02 HYDRAULICS SECTION | | | |